

DENALI

Wildlife & Wilderness 2021

DENALI NATIONAL PARK AND PRESERVE, ALASKA



AN ALASKA PHOTOGRAPHERS' CALENDAR



2021 JANUARY

Patrick J. Endres



Cow moose

December 2020

| | | | | | | |
|----|----|----|----|----|----|----|
| | | 1 | 2 | 3 | 4 | 5 |
| 6 | 7 | 8 | 9 | 10 | 11 | 12 |
| 13 | 14 | 15 | 16 | 17 | 18 | 19 |
| 20 | 21 | 22 | 23 | 24 | 25 | 26 |
| 27 | 28 | 29 | 30 | 31 | | |

February

| | | | | | | |
|----|----|----|----|----|----|----|
| | 1 | 2 | 3 | 4 | 5 | 6 |
| 7 | 8 | 9 | 10 | 11 | 12 | 13 |
| 14 | 15 | 16 | 17 | 18 | 19 | 20 |
| 21 | 22 | 23 | 24 | 25 | 26 | 27 |
| 28 | | | | | | |

Nature Notes

The park is frozen in darkness, but on clear nights one might be rewarded with a show of northern lights or a full moon reflecting off an icy peak. This is typically the coldest month in the park (average high temperature, 10.8°F).

Small rodents, like the tundra vole, remain active under the insulating layer of snow and can become a meal for a short-tailed weasel. Wolverines may be born (through March).

| Sunday | Monday | Tuesday | Wednesday | Thursday | Friday | Saturday |
|--------|--|---------------------|---|----------------------|---------------------|--|
| 27 | 28 | 29 | 30 | 31 | 1 NEW YEAR'S DAY | 2 |
| 3 | 4 | 5 | 6 | 7 | 8 | 9 |
| 10 | 11 | 12 New moon ● | 13 Celia Hunter, conservationist, 1919-2001 | 14 | 15 | 16 |
| 17 | 18 MARTIN LUTHER KING, JR. (observed) | 19 | 20 | 21 | 22 | 23 First park expansion added land east of Sanctuary River, 1922 |
| 24 | 25 | 26 | 27 | 28 Full moon ○ | 29 | 30 |
| 31 | | | | | | |





Lynx

photo by Matthew Quaid

2021 FEBRUARY



Snowshoe Hare

January

| | | | | | | |
|----|----|----|----|----|----|----|
| | | | | | 1 | 2 |
| 3 | 4 | 5 | 6 | 7 | 8 | 9 |
| 10 | 11 | 12 | 13 | 14 | 15 | 16 |
| 17 | 18 | 19 | 20 | 21 | 22 | 23 |
| 24 | 25 | 26 | 27 | 28 | 29 | 30 |
| 31 | | | | | | |

March

| | | | | | | |
|----|----|----|----|----|----|----|
| | 1 | 2 | 3 | 4 | 5 | 6 |
| 7 | 8 | 9 | 10 | 11 | 12 | 13 |
| 14 | 15 | 16 | 17 | 18 | 19 | 20 |
| 21 | 22 | 23 | 24 | 25 | 26 | 27 |
| 28 | 29 | 30 | 31 | | | |

Nature Notes

Grizzly bear cubs are born. Wolf packs prey on sheep, moose, and caribou and look for winter kill (all winter). Ravens congregate where food is abundant (all winter). Boreal owls, great gray owls, red squirrels, beaver, wolves, coyotes, and foxes mate.

Sunday Monday Tuesday Wednesday Thursday Friday Saturday

31

1

2

Marmot Day
(Alaska)

3

4

Record low -54°F recorded at
park headquarters, 1999

5

6

7

8

9

10

11

New moon
●

12

Chinese New Year

13

Abraham Lincoln, 1809

14

Valentine's Day

15

PRESIDENTS' DAY

16

Elizabeth Peratrovich
Day (Alaska)

17

Ash Wednesday

18

19

20

21

22

23

24

25

Purim begins

26

Heritage Day
(Yukon Territory)
Full moon
○

27

Mt. McKinley National Park
established. Bill signed by
President Wilson, 1917

First wedding performed
in park, 1945
George Washington, 1732

28

1

2

3

4

5

6

First winter ascent of Denali,
1967





Eldridge Glacier and Denali

photo by Fred Hirschmann

2021 MARCH



Mt Brooks and alpenglow

February

| | | | | | | |
|----|----|----|----|----|----|----|
| | 1 | 2 | 3 | 4 | 5 | 6 |
| 7 | 8 | 9 | 10 | 11 | 12 | 13 |
| 14 | 15 | 16 | 17 | 18 | 19 | 20 |
| 21 | 22 | 23 | 24 | 25 | 26 | 27 |
| 28 | | | | | | |

April

| | | | | | | |
|----|----|----|----|----|----|----|
| | | | | 1 | 2 | 3 |
| 4 | 5 | 6 | 7 | 8 | 9 | 10 |
| 11 | 12 | 13 | 14 | 15 | 16 | 17 |
| 18 | 19 | 20 | 21 | 22 | 23 | 24 |
| 25 | 26 | 27 | 28 | 29 | 30 | |

Nature Notes

The calendar says it's spring, but the ground will remain snow-covered a while longer. However, the days are noticeably longer and warmer.

Golden eagles migrate into the park where they will remain until October. Lynx mate. Porcupines are born. Snow buntings arrive.

Sunday Monday Tuesday Wednesday Thursday Friday Saturday

28

1

Olaus Murie, biologist,
1889-1963

2

3

4

5

6

Susan Butcher Day
(Alaska)

7

8

9

10

11

12

13

New moon
●

14

Daylight Savings
Time begins

15

16

17

St. Patrick's Day

18

19

20

Spring Equinox

21

22

23

24

25

26

27

Passover begins

28

Full moon
○

29

Vietnam
Veterans' Day
(Alaska)
Seward's Day
(Alaska)

30

31

1

2

3





Moose calf

photo by Catherine Diehl-Robbins

2021 APRIL

Patrick J. Endres



Cow moose and calves

March

| | | | | | | |
|----|----|----|----|----|----|----|
| | 1 | 2 | 3 | 4 | 5 | 6 |
| 7 | 8 | 9 | 10 | 11 | 12 | 13 |
| 14 | 15 | 16 | 17 | 18 | 19 | 20 |
| 21 | 22 | 23 | 24 | 25 | 26 | 27 |
| 28 | 29 | 30 | 31 | | | |

May

| | | | | | | |
|----|----|----|----|----|----|----|
| | | | | | | 1 |
| 2 | 3 | 4 | 5 | 6 | 7 | 8 |
| 9 | 10 | 11 | 12 | 13 | 14 | 15 |
| 16 | 17 | 18 | 19 | 20 | 21 | 22 |
| 23 | 24 | 25 | 26 | 27 | 28 | 29 |
| 30 | 31 | | | | | |

Nature Notes

Temperatures moderate at lower elevations, and "breakup" begins. Caribou begin moving from western lowlands and foothills. Following their ancient migration routes, they cross the park and head for summer ranges near Cantwell. Bears begin emerging from dens. Non-resident birds begin arriving. Weasels, hares, and ptarmigan begin changing to summer colors. Both snowshoe hares and marmots mate. Martens, beavers, foxes, and ground squirrels are born.

| Sunday | Monday | Tuesday | Wednesday | Thursday | Friday | Saturday |
|--|--------------------------|---------|-----------|-----------------------|---------------|--|
| 28 | 29 | 30 | 31 | 1 | 2 Good Friday | 3 |
| 4 Easter | 5 Easter Monday (Canada) | 6 | 7 | 8 | 9 | 10 |
| 11 New moon ● | 12 | 13 | 14 | 15 US tax returns due | 16 | 17 |
| 18 Henry P. Karstens appointed park's first chief ranger, 1921 | 19 | 20 | 21 | 22 Earth Day | 23 | 24 First airplane landing on Denali (Muldrow Glacier) with mountain climbers attempting a summit climb. Joe Crosson, pilot, 1932 |
| 25 | 26 Full moon ○ | 27 | 28 | 29 | 30 | 1 |



Denali south view

photo by Amber Johnson

M 2021 AY

Sunday

Monday

Tuesday

Wednesday

Thursday

Friday

Saturday



Grizzly bear and reflection pond

April

| | | | | | | |
|----|----|----|----|----|----|----|
| | | | | 1 | 2 | 3 |
| 4 | 5 | 6 | 7 | 8 | 9 | 10 |
| 11 | 12 | 13 | 14 | 15 | 16 | 17 |
| 18 | 19 | 20 | 21 | 22 | 23 | 24 |
| 25 | 26 | 27 | 28 | 29 | 30 | |

June

| | | | | | | | |
|----|----|----|----|----|----|----|---|
| | | | 1 | 2 | 3 | 4 | 5 |
| 6 | 7 | 8 | 9 | 10 | 11 | 12 | |
| 13 | 14 | 15 | 16 | 17 | 18 | 19 | |
| 20 | 21 | 22 | 23 | 24 | 25 | 26 | |
| 27 | 28 | 29 | 30 | | | | |

Nature Notes

Plants begin to leaf out at lower elevations as "breakup" moves to higher elevations. Migrating birds arrive, establish their territory, and mate. Grizzly bears emerge from their dens. Newborn caribou and moose calves are an important food supply for bears and wolves. Dall sheep lambs are born. Female caribou drop antlers. Pikas mate. Ground squirrels emerge from their dens on south-facing slopes. Lynx, marmots, hares, and voles are born. Goshawks' and golden eagles eggs hatch.

25

26

27

28

29

30

1

2

3

4

5

6

7

8

9

Mothers' Day

10

11

New moon ●

12

13

14

15

Armed Forces Day

16

17

Arbor Day (Alaska)

18

19

20

21

22

23

First live radio broadcast from Denali summit, 1984

24

Victoria Day (Canada)

25

26

Full moon ○

27

28

29

30

Two millionth visitor rode Denali Park shuttle bus, 2000

31

MEMORIAL DAY

Mt. Huntington, elev. 12,240 ft., climbed by Terray party, 1964

First dog team reached Denali summit, 1979





Dall sheep and fireweed

photo by Ryan Miller

2021 JUNE

Patrick J. Endres



Alaska poppies and moss campion

May

| | | | | | | |
|----|----|----|----|----|----|----|
| | | | | | | 1 |
| 2 | 3 | 4 | 5 | 6 | 7 | 8 |
| 9 | 10 | 11 | 12 | 13 | 14 | 15 |
| 16 | 17 | 18 | 19 | 20 | 21 | 22 |
| 23 | 24 | 25 | 26 | 27 | 28 | 29 |
| 30 | 31 | | | | | |

July

| | | | | | | |
|----|----|----|----|----|----|----|
| | | | | 1 | 2 | 3 |
| 4 | 5 | 6 | 7 | 8 | 9 | 10 |
| 11 | 12 | 13 | 14 | 15 | 16 | 17 |
| 18 | 19 | 20 | 21 | 22 | 23 | 24 |
| 25 | 26 | 27 | 28 | 29 | 30 | 31 |

Nature Notes

Maximum daylight is reached with only twilight passing for the night. Last large snow patches are gone, and leaves are out by mid-month in most locations. Summer rains begin towards the end of the month. Wildflower blooms peak approximately June 20-July 10. Dall sheep move to summer range. Golden eagle chicks hatch. Ptarmigan chicks hatch late in month. Wolverines mate (through next month). Grayling move to summer waters. Mosquitos hatch.

| Sunday | Monday | Tuesday | Wednesday | Thursday | Friday | Saturday |
|---|---|---|--|--|--|----------|
| 30 | 31 | 1 | 2 Harry Karstens appointed first park superintendent; park headquarters established at Nenana, 1921; Denali Park hotel opened, 1939 | 3 First ascent of Moose's Tooth, elevation 10,335', 1964 | 4 | 5 |
| 6 D-Day, 1944 Barbara Washburn was first woman atop Denali, 1947 | 7 | 8 Tatum, Harper, Stuck and Karstens first to reach Denali's South Summit, 1913 Galen Johnson, age 11, youngest climber to summit Denali, 2001 | 9 | 10 New moon ● Bellmore Browne, artist, mountaineer, and park advocate, 1880-1954 | 11 Norma Sanders first woman solo climb of Denali, 1990 | 12 |
| 13 Three Strawn brothers perished in climbing accident, Mt. Foraker, 2002 | 14 Flag Day | 15 | 16 | 17 | 18 First airplane landing in park, Carl Ben Eielson, in a WWI Jenny, 1924 | 19 |
| 20 Fathers' Day | 21 | 22 | 23 | 24 Full moon ○ | 25 | 26 |
| 27 Summer Solstice (Alaska) hours of daylight: Fairbanks, 21:49; Anchorage, 19:21; Juneau, 18:58 Four died in plane crash, Yentna Glacier, 2000 | 28 Tom Choate, age 78, oldest climber to reach Denali summit, 2013 | 29 | 30 William Nancarrow named first permanent park naturalist, 1951 | 1 | 2 | 3 |





Denali and Cotton Grass

photo by Patrick J Endres

2021 JULY

Patrick J. Endres



Forget-me-not blossoms

June

| | | | | | | |
|----|----|----|----|----|----|----|
| | | 1 | 2 | 3 | 4 | 5 |
| 6 | 7 | 8 | 9 | 10 | 11 | 12 |
| 13 | 14 | 15 | 16 | 17 | 18 | 19 |
| 20 | 21 | 22 | 23 | 24 | 25 | 26 |
| 27 | 28 | 29 | 30 | | | |

August

| | | | | | | |
|----|----|----|----|----|----|----|
| 1 | 2 | 3 | 4 | 5 | 6 | 7 |
| 8 | 9 | 10 | 11 | 12 | 13 | 14 |
| 15 | 16 | 17 | 18 | 19 | 20 | 21 |
| 22 | 23 | 24 | 25 | 26 | 27 | 28 |
| 29 | 30 | 31 | | | | |

Nature Notes

It's the height of summer. The warmest days bring mosquitos to full activity while wildflowers are in peak bloom. Pikas begin storing vegetation for winter food supplies. Caribou herds begin moving westward through the park, returning from their summer ranges.

Summer thunderstorms often obscure Denali as climbing season comes to an end. Mountain climbers leave the mountain because of dangerous snow and ice conditions.

| Sunday | Monday | Tuesday | Wednesday | Thursday | Friday | Saturday |
|-----------------------|--|---|--|---|---------------------------------------|-----------------------------------|
| 27 | 28 | 29 | 30 | 1 Canada Day (Canada) | 2 | 3 |
| 4 INDEPENDENCE DAY | 5 | 6 | 7 | 8 | 9 Alaska Flag Day New moon ● | 10 |
| | First ascent of Mount Hunter, elev. 14,570', 1954 | First ascent of Mount Foraker, elev. 17,400', 1934 | Construction began on pioneer road; 12 miles built from McKinley Park Station to Savage River in two days, 1922 | | | |
| 11 | 12 | 13 | 14 | 15 | 16 | 17 |
| | | | | Pres. Warren Harding drove a golden spike to complete the Alaska Railroad, Nenana, 1923 | | |
| 18 | 19 | 20 | 21 | 22 | 23 Full moon ○ | 24 Ted Stevens Day (Alaska) |
| | | | | Bill VonderMehden ran 92- mile park road in 25 hrs., 2011 | | |
| 25 Parents' Day | 26 | 27 | 28 | 29 | 30 | 31 |



Grizzly bear and blueberries

photo by Hugh Rose

2021 AUGUST



Blueberries

July

| | | | | | | |
|----|----|----|----|----|----|----|
| | | | | 1 | 2 | 3 |
| 4 | 5 | 6 | 7 | 8 | 9 | 10 |
| 11 | 12 | 13 | 14 | 15 | 16 | 17 |
| 18 | 19 | 20 | 21 | 22 | 23 | 24 |
| 25 | 26 | 27 | 28 | 29 | 30 | 31 |

September

| | | | | | | | |
|----|----|----|----|----|----|----|---|
| | | | | 1 | 2 | 3 | 4 |
| 5 | 6 | 7 | 8 | 9 | 10 | 11 | |
| 12 | 13 | 14 | 15 | 16 | 17 | 18 | |
| 19 | 20 | 21 | 22 | 23 | 24 | 25 | |
| 26 | 27 | 28 | 29 | 30 | | | |

Nature Notes

Fall is in the air. The days are shorter and cooler as the last of the wildflowers bloom. Rain continues and may turn to snow at the higher elevations. Cooler temperatures diminish the mosquitos. Brilliant fall colors begin at the higher elevations; willow, blueberry, bearberry and dwarf birch reveal a rich and brilliant mixture of reds, oranges, yellows and golds. Berries ripen. Bird migration to the south begins. Beavers begin caching food in their ponds.

| Sunday | Monday | Tuesday | Wednesday | Thursday | Friday | Saturday |
|---|---|---------|---|--|--|--|
| 1 C-123 cargo plane crashed near Mt. Healy, 3 died, 2010 | 2 Civic Day (Canada) | 3 | 4 | 5 | 6 First ascent of Mt. Foraker, north summit, 19,400 ft., by Houston party, 1934 | 7 |
| 8 New moon ● | 9 | 10 | 11 | 12 \$9.2-million Eielson Visitor Center dedicated, 2008 | 13 First flight over Denali summit, Matt Nieminen, 1930 | 14 |
| 15 | 16 Discovery Day (Yukon Territory) | 17 | 18 Mardy Murie, conservationist, 1902-2003 | 19 | 20 William Dall, naturalist, 1845-1927 | 21 |
| 22 Full moon ○ | 23 | 24 | 25 | 26 | 27 | 28 Mt. McKinley officially renamed Denali, 2015 |
| 29 | 30 | 31 | 1 | 2 | 3 | 4 |





Denali Reflection

photo by Ron Niebrugge

2021 SEPTEMBER

Patrick J. Endres



Pioneer Ridge, Denali

August

| | | | | | | |
|----|----|----|----|----|----|----|
| 1 | 2 | 3 | 4 | 5 | 6 | 7 |
| 8 | 9 | 10 | 11 | 12 | 13 | 14 |
| 15 | 16 | 17 | 18 | 19 | 20 | 21 |
| 22 | 23 | 24 | 25 | 26 | 27 | 28 |
| 29 | 30 | 31 | | | | |

October

| | | | | | | |
|----|----|----|----|----|----|----|
| | | | | | 1 | 2 |
| 3 | 4 | 5 | 6 | 7 | 8 | 9 |
| 10 | 11 | 12 | 13 | 14 | 15 | 16 |
| 17 | 18 | 19 | 20 | 21 | 22 | 23 |
| 24 | 25 | 26 | 27 | 28 | 29 | 30 |
| 31 | | | | | | |

Nature Notes

The park headquarters area comes alive with brilliant gold, yellow, and red fall colors. Freezing temperatures are common, but daytime highs are still pleasant at lower elevations.

Most insects have died off. Marmots return to their dens. Bird migrations peak. Moose breed (into October). Ptarmigan, weasel, and hare begin changing to winter white. Snow can close the park road at any time.

| Sunday | Monday | Tuesday | Wednesday | Thursday | Friday | Saturday |
|-------------------------|---|---------|-------------------------|----------|---|---|
| 29 | 30 | 31 | 1 | 2 | 3 | 4 |
| 5 | 6 LABOR DAY Rosh Hashanah begins New moon ● | 7 | 8 | 9 | 10 McKinley Park hotel burned, 1972 | 11 Denali flightseeing grounded for 3 days following terrorist attack on two U.S. cities, 2001 |
| 12 Grandparents' Day | 13 | 14 | 15 Yom Kippur begins | 16 | 17 | 18 |
| 19 | 20 Full moon ○ The Boone and Crockett Club endorsed establishing a national park near Denali, 1915; Denali State Park, 1970 | 21 | 22 Fall Equinox | 23 | 24 | 25 |
| 26 | 27 | 28 | 29 | 30 | 1 | 2 |





Sparring Bull Moose

photo by John R DeLapp

2021 OCTOBER

Sunday

Monday

Tuesday

Wednesday

Thursday

Friday

Saturday



Birch and aspen trees

September

| | | | | | | |
|----|----|----|----|----|----|----|
| | | | 1 | 2 | 3 | 4 |
| 5 | 6 | 7 | 8 | 9 | 10 | 11 |
| 12 | 13 | 14 | 15 | 16 | 17 | 18 |
| 19 | 20 | 21 | 22 | 23 | 24 | 25 |
| 26 | 27 | 28 | 29 | 30 | | |

November

| | | | | | | | | |
|----|----|----|----|----|----|----|---|---|
| | | | 1 | 2 | 3 | 4 | 5 | 6 |
| 7 | 8 | 9 | 10 | 11 | 12 | 13 | | |
| 14 | 15 | 16 | 17 | 18 | 19 | 20 | | |
| 21 | 22 | 23 | 24 | 25 | 26 | 27 | | |
| 28 | 29 | 30 | | | | | | |

Nature Notes

By late October and early November, all small streams and lakes are frozen. Days are noticeably shorter.

Snowshoe hares, weasels, and ptarmigan change to winter-white colors. Red squirrels finish stockpiling supplies. Bears return to dens. Wood frogs and arctic ground squirrels begin hibernation.

26

27

28

29

30

1

2

3

4

5

6

New moon
●

7

8

9

10

11 COLUMBUS DAY
(observed)
Thanksgiving (Canada)
Indigenous People's Day
(Alaska)

12

13

14

15

16

17

18 Alaska Day
(Alaska)

19

20 Full moon
○

21

22

23

24

Virginia Hill Wood,
conservationist, 1917-2013

31

Halloween

25

Tallest unnamed peak in park
named for Sen. Ted Stevens,
2010

26

27

28

29

30





Cathedral Spires

photo by Donna Dewhurst

2021 NOVEMBER



Bull caribou

October

| | | | | | | |
|----|----|----|----|----|----|----|
| | | | | | 1 | 2 |
| 3 | 4 | 5 | 6 | 7 | 8 | 9 |
| 10 | 11 | 12 | 13 | 14 | 15 | 16 |
| 17 | 18 | 19 | 20 | 21 | 22 | 23 |
| 24 | 25 | 26 | 27 | 28 | 29 | 30 |
| 31 | | | | | | |

December

| | | | | | | | |
|----|----|----|----|----|----|----|---|
| | | | | 1 | 2 | 3 | 4 |
| 5 | 6 | 7 | 8 | 9 | 10 | 11 | |
| 12 | 13 | 14 | 15 | 16 | 17 | 18 | |
| 19 | 20 | 21 | 22 | 23 | 24 | 25 | |
| 26 | 27 | 28 | 29 | 30 | 31 | | |

Nature Notes

Days continue to grow shorter and colder. Dall sheep breeding (through December). Lynx hunt for snowshoe hare (all winter). Red fox hunt for rodents living under the snow. Bull caribou and moose shed antlers through the next few months. Wood frogs remain alive in a cryogenic state; heart and lungs stop functioning until they thaw out in spring.

| Sunday | Monday | Tuesday | Wednesday | Thursday | Friday | Saturday |
|--|--|-----------------------|--|--|---|---|
| 31 | 1 Marcus Tyler reported for duty as first permanent park ranger, 1921 | 2 Election Day | 3 Park shaken by 7.9 earthquake, 2002 | 4 New moon ● | 5 | 6 |
| 7 Daylight Savings Time ends | 8 | 9 | 10 | 11 VETERANS DAY Remembrance Day (Canada) | 12 Hudson Stuck, missionary, 1863-1920 | 13 |
| 14 USAF C-119 crashed into Mt. Silverthorne (elev. 13,320 ft.), killing 19 people, 1952 | 15 | 16 | 17 | 18 Full moon ○ | 19 | 20 Don Sheldon, pioneer aviator, 1921-1975 |
| 21 | 22 | 23 | 24 | 25 THANKSGIVING | 26 | 27 |
| 28 Hanukkah begins | 29 | 30 | 1 | 2 | 3 | 4 |

Order next year's Denali calendar online at GreatlandGraphics.com





Wolverine

photo by Matthew Quaid

2021 DECEMBER



Red fox

November

| | | | | | | |
|----|----|----|----|----|----|----|
| | 1 | 2 | 3 | 4 | 5 | 6 |
| 7 | 8 | 9 | 10 | 11 | 12 | 13 |
| 14 | 15 | 16 | 17 | 18 | 19 | 20 |
| 21 | 22 | 23 | 24 | 25 | 26 | 27 |
| 28 | 29 | 30 | | | | |

January 2022

| | | | | | | |
|----|----|----|----|----|----|----|
| | | | | | | 1 |
| 2 | 3 | 4 | 5 | 6 | 7 | 8 |
| 9 | 10 | 11 | 12 | 13 | 14 | 15 |
| 16 | 17 | 18 | 19 | 20 | 21 | 22 |
| 23 | 24 | 25 | 26 | 27 | 28 | 29 |
| 30 | 31 | | | | | |

Nature Notes

Winter locks the park in its icy darkness with temperatures dropping below zero and wind chills even lower. About four hours of daylight remain on the shortest days of the year.

Moose and male caribou drop antlers.

| Sunday | Monday | Tuesday | Wednesday | Thursday | Friday | Saturday |
|---------------------------|--------|--|-----------|--|----------------------|---------------------|
| 28 | 29 | 30 | 1 | 2 Pres. Carter signed Alaska National Interest Lands Conservation Act, 1980 | 3 New moon ● | 4 |
| 5 | 6 | 7 Pearl Harbor Day | 8 | 9 | 10 | 11 |
| 12 | 13 | 14 | 15 | 16 | 17 | 18 Full moon ○ |
| 19 | 20 | 21 | 22 | 23 | 24 | 25 CHRISTMAS DAY |
| 26 Boxing Day (Canada) | 27 | 28 Winter Solstice daylight hours: Juneau: 6:21; Anchorage: 5:23; Fairbanks: 3:42 | 29 | 30 | 31 New Year's Eve | 1 |

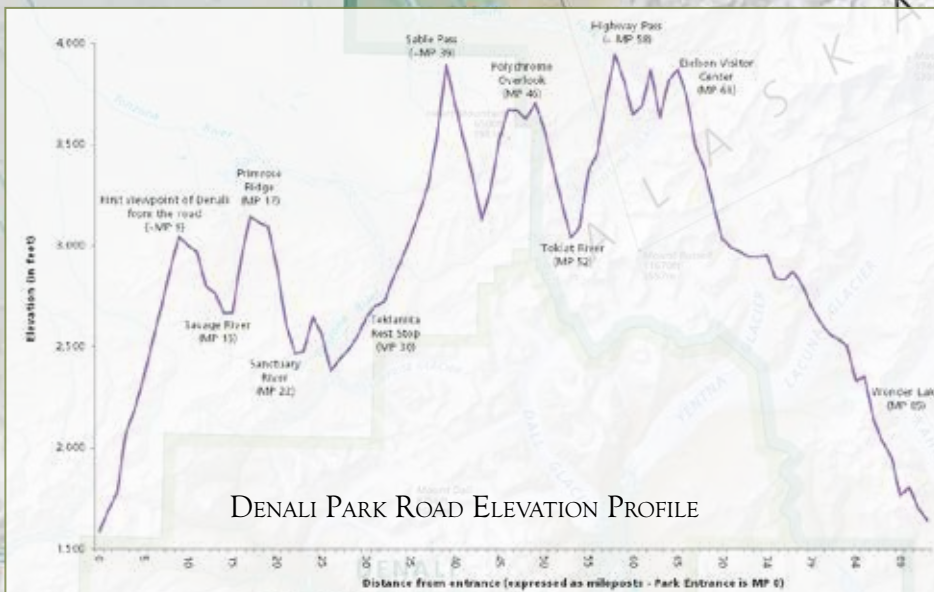


DENALI NATIONAL PARK & PRESERVE

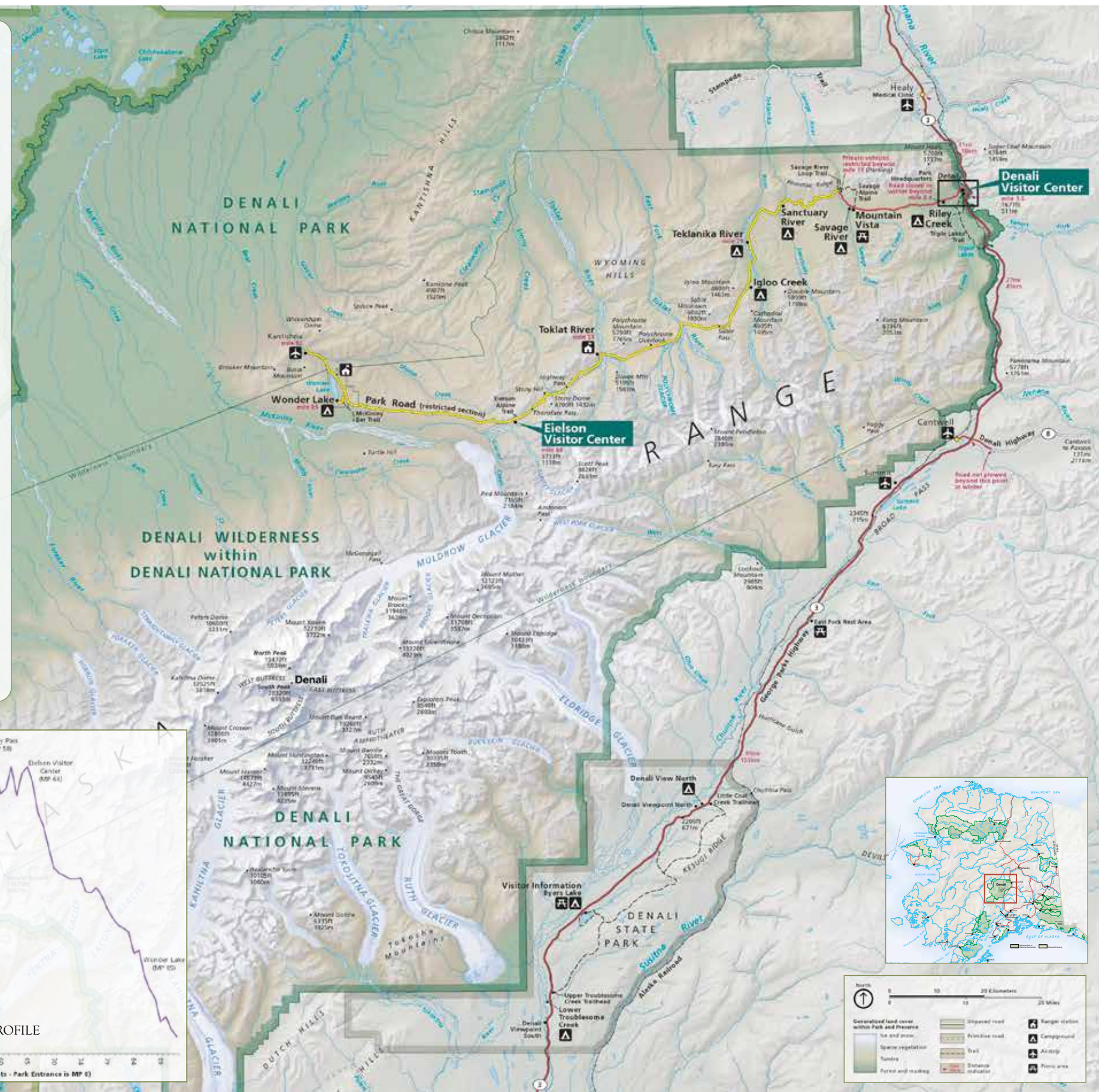
Denali National Park and Preserve is one of the world's most scenic and wildlife rich national parks in the nation, if not the world. This is also the reason that more than 400,000 people visit Denali each year to hike, backpack, photograph, and enjoy its wilderness beauty. The park and preserve combined is 6,075,029 acres, larger than the state of Massachusetts. Situated in the heart of the Alaska Range, the park's mountain weather is dynamic and constantly changing. Denali crowns the Alaska Range as North America's tallest mountain, rising to 20,310 feet (6,190 m). In 2015 Mt. McKinley was officially renamed Denali, its Athabascan name meaning the "*The High One*."

DENALI PARK ROAD

The Denali Park entrance is located 123 miles from Fairbanks and 237 miles from Anchorage. The park has only one narrow and windy gravel road that penetrates 92 miles into the park on the north side of the Alaska Range. Beginning at 1,585 ft. (483m) it crosses four mountain passes—the highest at 3,900 ft. (1188m). Private vehicles have been restricted to the first 14-mile paved section of the road since 1972 to minimize impacts to wildlife. Beyond that point, a system of transit and tour buses take visitors into the park to enjoy the region's beautiful landscape, views of Denali, and wildlife along the road.



DENALI PARK ROAD ELEVATION PROFILE



VISITING DENALI NATIONAL PARK AND PRESERVE



Since private vehicle travel into the park is prohibited, the park offers a shuttle bus service. Transit bus trips originate at the Denali Bus Depot near the park entrance and operate from late May until early September. Transit bus ticket prices vary with the length of the trip into the park. Buses stop for wildlife viewing and will let you off at many locations. No food is available inside the park so, bring your own. No pets are allowed on the buses. There are six campgrounds

in the park, and they are often full throughout the summer, so plan well in advance. Permits are required to camp overnight in the wilderness backcountry of the park. Permits can be obtained at the Denali Visitor Center at the park entrance. For bus and campground reservations, see reservedenali.com or call 800.622.7275. A wealth of important information is available on the park website: nps.gov/dena.

Alaska Geographic is the official nonprofit education and fundraising partner to Alaska's National Parks, National Wildlife Refuges, and BLM Conservation Lands, creating and delivering exceptional education programs and products to connect people with Alaska's public lands. Sales, memberships, and donations are returned to the public lands to support education programs, stewardship projects, and youth programs. Learn more at akgeo.org.



2022

| JANUARY | | | | | | | APRIL | | | | | | | JULY | | | | | | | OCTOBER | | | | | | |
|----------|----|----|----|----|----|----|-------|----|----|----|----|----|----|-----------|----|----|----|----|----|----|----------|----|----|----|----|----|----|
| S | M | T | W | T | F | S | S | M | T | W | T | F | S | S | M | T | W | T | F | S | S | M | T | W | T | F | S |
| | | | | | | 1 | | | | | | 1 | 2 | | | | | | 1 | 2 | | | | | | | 1 |
| 2 | 3 | 4 | 5 | 6 | 7 | 8 | 3 | 4 | 5 | 6 | 7 | 8 | 9 | 3 | 4 | 5 | 6 | 7 | 8 | 9 | 2 | 3 | 4 | 5 | 6 | 7 | 8 |
| 9 | 10 | 11 | 12 | 13 | 14 | 15 | 10 | 11 | 12 | 13 | 14 | 15 | 16 | 10 | 11 | 12 | 13 | 14 | 15 | 16 | 9 | 10 | 11 | 12 | 13 | 14 | 15 |
| 16 | 17 | 18 | 19 | 20 | 21 | 22 | 17 | 18 | 19 | 20 | 21 | 22 | 23 | 17 | 18 | 19 | 20 | 21 | 22 | 23 | 16 | 17 | 18 | 19 | 20 | 21 | 22 |
| 23 | 24 | 25 | 26 | 27 | 28 | 29 | 24 | 25 | 26 | 27 | 28 | 29 | 30 | 24 | 25 | 26 | 27 | 28 | 29 | 30 | 23 | 24 | 25 | 26 | 27 | 28 | 29 |
| 30 | 31 | | | | | | | | | | | | | 31 | | | | | | | 30 | 31 | | | | | |
| FEBRUARY | | | | | | | MAY | | | | | | | AUGUST | | | | | | | NOVEMBER | | | | | | |
| S | M | T | W | T | F | S | S | M | T | W | T | F | S | S | M | T | W | T | F | S | S | M | T | W | T | F | S |
| | | | | 1 | 2 | 3 | 1 | 2 | 3 | 4 | 5 | 6 | 7 | | | | | | | | | | | | | | |
| 6 | 7 | 8 | 9 | 10 | 11 | 12 | 8 | 9 | 10 | 11 | 12 | 13 | 14 | 7 | 8 | 9 | 10 | 11 | 12 | 13 | 6 | 7 | 8 | 9 | 10 | 11 | 12 |
| 13 | 14 | 15 | 16 | 17 | 18 | 19 | 15 | 16 | 17 | 18 | 19 | 20 | 21 | 14 | 15 | 16 | 17 | 18 | 19 | 20 | 13 | 14 | 15 | 16 | 17 | 18 | 19 |
| 20 | 21 | 22 | 23 | 24 | 25 | 26 | 22 | 23 | 24 | 25 | 26 | 27 | 28 | 21 | 22 | 23 | 24 | 25 | 26 | 27 | 20 | 21 | 22 | 23 | 24 | 25 | 26 |
| 27 | 28 | | | | | | 29 | 30 | 31 | | | | | 28 | 29 | 30 | 31 | | | | 27 | 28 | 29 | 30 | | | |
| MARCH | | | | | | | JUNE | | | | | | | SEPTEMBER | | | | | | | DECEMBER | | | | | | |
| S | M | T | W | T | F | S | S | M | T | W | T | F | S | S | M | T | W | T | F | S | S | M | T | W | T | F | S |
| | | | | 1 | 2 | 3 | | | | | 1 | 2 | 3 | | | | | | 1 | 2 | 3 | | | | | | |
| 6 | 7 | 8 | 9 | 10 | 11 | 12 | 5 | 6 | 7 | 8 | 9 | 10 | 11 | 4 | 5 | 6 | 7 | 8 | 9 | 10 | 4 | 5 | 6 | 7 | 8 | 9 | 10 |
| 13 | 14 | 15 | 16 | 17 | 18 | 19 | 12 | 13 | 14 | 15 | 16 | 17 | 18 | 11 | 12 | 13 | 14 | 15 | 16 | 17 | 11 | 12 | 13 | 14 | 15 | 16 | 17 |
| 20 | 21 | 22 | 23 | 24 | 25 | 26 | 19 | 20 | 21 | 22 | 23 | 24 | 25 | 18 | 19 | 20 | 21 | 22 | 23 | 24 | 18 | 19 | 20 | 21 | 22 | 23 | 24 |
| 27 | 28 | 29 | 30 | 31 | | | 26 | 27 | 28 | 29 | 30 | | | 25 | 26 | 27 | 28 | 29 | 30 | | 25 | 26 | 27 | 28 | 29 | 30 | 31 |

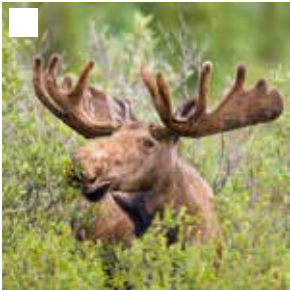
WHAT DID YOU SEE WHILE VISITING DENALI?



Coyote (*Canis latrans*)



Porcupine (*Erethizon dorsatum*)



Moose (*Alces alces gigas*)



Snowshoe hare (*Lepus americanus*)



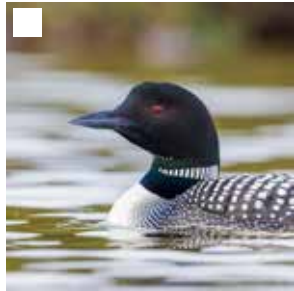
Spruce grouse (*Falcipennis canadensis*)



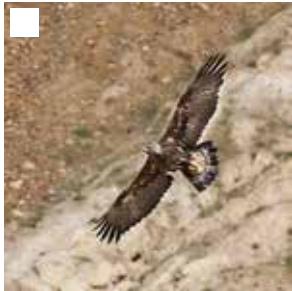
Hoary Marmot (*Marmota caligata*)



Caribou (*Rangifer tarandus*)



Common loon (*Gavia immer*)



Golden eagle (*Aquila chrysaetos*)



Dall Sheep (*Ovis dalli*)



Lynx (*Lynx canadensis*)



Willow ptarmigan (*Lagopus lagopus*)



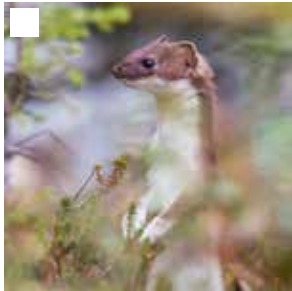
Collard Pika (*Ochotona collaris*)



Grizzly bear (*Ursus arctos*)



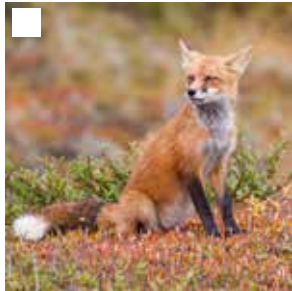
Common raven (*Corvus corax*)



Short-tailed weasel (*Mustela erminea*)



Wolf (*Canus lupis*)



Red fox (*Vulpes vulpes*)



Arctic ground squirrel (*Spermophilus parryii*)



Beaver (*Castor canadensis*)



Denali

Photos by Patrick J Endres

DENALI Wildlife & Wilderness 2021

DENALI NATIONAL PARK AND PRESERVE, ALASKA



Denali & Aurora

MARKETA S MURRAY



Lynx

MATTHEW QUAID



Denali & Eldridge Glacier

FRED HIRSCHMANN



Moose Calf

CATHERINE DIEHL-ROBBINS



Denali South View

AMBER JOHNSON



Dall Sheep Ram & Fireweed

RYAN MILLER



Denali & Cotton Grass

PATRICK J ENDRES



Grizzly Bear

HUGH ROSE



Denali & Reflection Pond

RON NIEBRUGGE



Sparring Bull Moose

JOHN R DELAPP



Cathedral Spires

DONNA DEWHURST



Wolverine

MATTHEW QUAID

GREATLAND GRAPHICS
3875 Geist Rd, Ste E PMB 449
Fairbanks, Alaska, 99709, USA
GREATLANDGRAPHICS.COM
907.337.1234

INSIDE: Denali park map with park road elevation profile, natural history information, inset photos, and wildlife photo index.

Order from our full line of award-winning Alaska calendars, books, and notecards at GreatlandGraphics.com. Find resources to help plan your trip to Denali National Park at nps.gov/dena.



Denali Park Map



Denali Wildlife Photo Reference



ISBN 978-1-940381-40-4 US \$ 13.95



© 2020 Greatland Graphics | Edition 28 | Printed in Canada | Calendar dates and times for equinoxes, solstices and full moons are adjusted for Alaska time.

Greatland Graphics is an Alaska-owned company that features Alaskan artists and photographers. When you purchase our products, you support their creative endeavors. Each year we donate a portion of our income to not-for-profit organizations that support the future of Alaska's land and communities. Learn more at GreatlandGraphics.com.

This calendar was printed in Canada with plant-based inks on paper milled from trees harvested in accord with the internationally recognized Forest Stewardship Council™ (FSC) guidelines promoting responsible forest management.

