

DENALI NATIONAL PARK & PRESERVE, ALASKA

# DENALI

## WILDLIFE & WILDERNESS 2026

AN ALASKA PHOTOGRAPHERS' CALENDAR



Hiker and alpenglow on Denali, winter

photo by Steven Miley

# JANUARY



# 2026

SUNDAY MONDAY TUESDAY WEDNESDAY THURSDAY FRIDAY SATURDAY



Pools on Ruth Glacier

Everyone wants to live on top of the mountain, but all the happiness and growth occurs while you are climbing it. – Andy Rooney

				<b>1</b> NEW YEAR'S DAY	<b>2</b>	<b>3</b> Full moon 
<b>4</b>	<b>5</b>	<b>6</b>	<b>7</b> Eastern Orthodox Christmas	<b>8</b>	<b>9</b>	<b>10</b>
<b>11</b>	<b>12</b>	<b>13</b>	<b>14</b> Eastern Orthodox New Year  Celia Hunter, conservationist, (1919-2001)	<b>15</b>	<b>16</b>	<b>17</b>
<b>18</b> New moon 	<b>19</b> MARTIN LUTHER KING, JR.	<b>20</b>	<b>21</b>	<b>22</b>	<b>23</b>	<b>24</b>  First park expansion added land east of Sanctuary River, 1922
<b>25</b>	<b>26</b>	<b>27</b>	<b>28</b>	<b>29</b>	<b>30</b>	<b>31</b>

## December 2025

1 2 3 4 5 6  
7 8 9 10 11 12 13  
14 15 16 17 18 19 20  
21 22 23 24 25 26 27  
28 29 30 31

## February

1 2 3 4 5 6 7  
8 9 10 11 12 13 14  
15 16 17 18 19 20 21  
22 23 24 25 26 27 28



Denali South Buttress

photo by Carl Johnson

# FEBRUARY

# 2026



Lynx tracks in snow

SUNDAY	MONDAY	TUESDAY	WEDNESDAY	THURSDAY	FRIDAY	SATURDAY
<b>I</b> Full moon ○	<b>2</b> Marmot Day (Alaska)	<b>3</b>	<b>4</b>	<b>5</b>  Record low -54°F recorded at park headquarters, 1999	<b>6</b>	<b>7</b>
<b>8</b>	<b>9</b>	<b>10</b>	<b>11</b>	<b>12</b> Abraham Lincoln (1809-1865)	<b>13</b>	<b>14</b> Valentine's Day
<b>15</b>	<b>16</b> PRESIDENTS' DAY Elizabeth Peratrovich Day (Alaska)	<b>17</b> Ramadan begins Chinese New Year New moon ●	<b>18</b> Ash Wednesday	<b>19</b>	<b>20</b> Heritage Day (Yukon Territory)	<b>21</b>  First wedding performed in park, 1945
<b>22</b> George Washington (1732-1799)	<b>23</b>	<b>24</b>	<b>25</b>	<b>26</b>  Mt. McKinley National Park established. Bill signed by President Wilson, 1917	<b>27</b>	<b>28</b>  First winter ascent of Denali, 1967

**January**  
 1 2 3  
 4 5 6 7 8 9 10  
 11 12 13 14 15 16 17  
 18 19 20 21 22 23 24  
 25 26 27 28 29 30 31

**March**  
 1 2 3 4 5 6 7  
 8 9 10 11 12 13 14  
 15 16 17 18 19 20 21  
 22 23 24 25 26 27 28  
 29 30 31

May your dreams be larger than mountains and may you have the courage to scale their summits. – Harley King



# MARCH

# 2026



Dall sheep rams

SUNDAY	MONDAY	TUESDAY	WEDNESDAY	THURSDAY	FRIDAY	SATURDAY
<b>I</b>  Olaus Murie, biologist, (1889-1963)	<b>2</b>	<b>3</b> Full moon ○	<b>4</b>	<b>5</b>	<b>6</b>	<b>7</b> Susan Butcher Day (Alaska)
<b>8</b> Daylight Saving Time begins	<b>9</b>	<b>10</b>	<b>11</b>	<b>12</b>	<b>13</b>	<b>14</b>  First successful solo winter climb of Denali completed by Vern Tejas, 1988
<b>15</b>	<b>16</b>	<b>17</b> St. Patrick's Day	<b>18</b> Ramadan ends New moon ●	<b>19</b>  Second park expansion added land to northwest and east sides, including Wonder Lake. Park totaled more than two million acres, 1932.	<b>20</b> Spring Equinox	<b>21</b>
<b>22</b>	<b>23</b>	<b>24</b>	<b>25</b>	<b>26</b>	<b>27</b>	<b>28</b>
<b>29</b> Palm Sunday Vietnam Veterans Day	<b>30</b> Seward's Day (Alaska)	<b>31</b>	<p>If I could lick the sunset, I'll bet it would taste like Neapolitan ice cream. – Jaron Kintz</p>			

## February

1 2 3 4 5 6 7  
8 9 10 11 12 13 14  
15 16 17 18 19 20 21  
22 23 24 25 26 27 28

## April

1 2 3 4  
5 6 7 8 9 10 11  
12 13 14 15 16 17 18  
19 20 21 22 23 24 25  
26 27 28 29 30



Cotton grass and Alaska Range

photo by Fred Hirschmann



# APRIL

# 2026

SUNDAY MONDAY TUESDAY WEDNESDAY THURSDAY FRIDAY SATURDAY



Moonrise over Toklat River

There are few sights more pleasant to the eye, than a wide cotton field when it is in the bloom. It presents an appearance of purity, like an immaculate expanse of light, new-fallen snow.  
 – Solomon Northup

**I** Passover begins  
Full moon  
○

**2**

**3** Good Friday

**4**

**5** Easter

**6**

**7**

**8**

**9**

**10**

**11**

Henry P. Karstens appointed park's first chief ranger, 1921

**12** Eastern Orthodox Easter

**13**

**14**

**15** US tax returns due

**16**

**17** New moon ●

**18**

**19**

**20**

**21**

**22** Earth Day

**23**

**24** Arbor Day

**25**

First airplane landing on Denali (Muldrow Glacier) with mountain climbers. Joe Crosson, pilot, 1932

**26**

**27**

**28**

**29**

**30**

## March

1 2 3 4 5 6 7  
 8 9 10 11 12 13 14  
 15 16 17 18 19 20 21  
 22 23 24 25 26 27 28  
 29 30 31

## May

1 2  
 3 4 5 6 7 8 9  
 10 11 12 13 14 15 16  
 17 18 19 20 21 22 23  
 24 25 26 27 28 29 30  
 31



Arctic poppies

photo by Patrick Endres

# MAY

# 2026

SUNDAY MONDAY TUESDAY WEDNESDAY THURSDAY FRIDAY SATURDAY



Fireweed and foxtail barley

Deep in their roots, all flowers keep the light.  
– Theodore Roethke

					I	Full moon ○	2
3	4	5 Cinco de Mayo	6	7	8	9	
10 Mother's Day	11	12	13	14	15	16 Armed Forces Day New moon ●	
17	18 Victoria Day (Canada)	19	20 Arbor Day (Alaska)	21	22	23	
24	25 MEMORIAL DAY	26	27	28	29	30	First live radio broadcast from Denali's summit, 1984
31 Blue moon ○	Mt. Huntington, elev. 12,240 ft., climbed by Turray party, 1964				First dog team reached Denali summit, 1979	Two millionth visitor rode Denali Park shuttle bus, 2000	

## April

1 2 3 4  
5 6 7 8 9 10 11  
12 13 14 15 16 17 18  
19 20 21 22 23 24 25  
26 27 28 29 30

## June

1 2 3 4 5 6  
7 8 9 10 11 12 13  
14 15 16 17 18 19 20  
21 22 23 24 25 26 27  
28 29 30



Brown bear sow with cubs

photo by Patrick Endres

# JUNE

# 2026

SUNDAY MONDAY TUESDAY WEDNESDAY THURSDAY FRIDAY SATURDAY



Brown bear cub

	<b>I</b>	<b>2</b> Harry Karstens appointed first park superintendent; park headquarters established at Nenana, 1921; Denali Park hotel opened, 1939	<b>3</b> First ascent of Moose's Tooth, elevation 10,335', 1964	<b>4</b>	<b>5</b>	<b>6</b> Barbara Washburn was first woman atop Denali, 1947
<b>7</b>	<b>8</b> Tatum, Harper, Stuck and Karstens first to reach Denali's South Summit, 1913 Galen Johnson, age 11, youngest climber to summit Denali, 2001	<b>9</b>	<b>10</b> Bellmore Browne, artist, mountaineer, and park advocate, (1880-1954)	<b>11</b> Norma Sanders first woman solo climb of Denali, 1990	<b>12</b>	<b>13</b> Three Strawn brothers perished in climbing accident, Mt. Foraker, 2002
<b>14</b> Flag Day New moon ●	<b>15</b>	<b>16</b>	<b>17</b>	<b>18</b> First airplane landing in park, Carl Ben Eielson, in a WWI Jenny, 1924	<b>19</b> EMANCIPATION DAY (Juneteenth)	<b>20</b> Four died in plane crash, Yentna Glacier, 2000
<b>21</b> Summer Solstice Father's Day	<b>22</b>	<b>23</b> William Nancarrow named first permanent park naturalist, 1951	<b>24</b>	<b>25</b>	<b>26</b>	<b>27</b>
<b>28</b>	<b>29</b> Full moon ○	<b>30</b>	<b>Always respect Mother Nature. Especially when she weighs 400 pounds and is guarding her baby. - James Rollins</b>			
Tom Choate, age 78, oldest climber to reach Denali summit, 2013						

## May

1 2  
3 4 5 6 7 8 9  
10 11 12 13 14 15 16  
17 18 19 20 21 22 23  
24 25 26 27 28 29 30  
31

## July

1 2 3 4  
5 6 7 8 9 10 11  
12 13 14 15 16 17 18  
19 20 21 22 23 24 25  
26 27 28 29 30 31



Red fox

photo by Cathy Hart

# JULY

# 2026

SUNDAY MONDAY TUESDAY WEDNESDAY THURSDAY FRIDAY SATURDAY



Arctic ground squirrel

Real freedom lies in wildness, not in civilization.  
– Charles Lindbergh

**June**  
1 2 3 4 5 6  
7 8 9 10 11 12 13  
14 15 16 17 18 19 20  
21 22 23 24 25 26 27  
28 29 30

**August**  
1  
2 3 4 5 6 7 8  
9 10 11 12 13 14 15  
16 17 18 19 20 21 22  
23 24 25 26 27 28 29  
30 31

			<b>I</b> Canada Day (Canada)	<b>2</b>	<b>3</b> INDEPENDENCE DAY (observed)	<b>4</b> INDEPENDENCE DAY
<b>5</b>	<b>6</b>	<b>7</b>	<b>8</b>	<b>9</b> Alaska Flag Day	<b>10</b>	<b>11</b>
First ascent of Mount Hunter, elev. 14,570', 1954	First ascent of Mount Foraker, elev. 17,400', 1934	Construction began on pioneer road; 12 miles built from McKinley Park Station to Savage River in two days, 1922				
<b>12</b>	<b>13</b>	<b>14</b> New moon ●	<b>15</b>	<b>16</b>	<b>17</b>	<b>18</b>
			Pres. Warren Harding drove a golden spike to complete the Alaska Railroad, Nenana, 1923			
<b>19</b>	<b>20</b>	<b>21</b>	<b>22</b>	<b>23</b>	<b>24</b>	<b>25</b> Ted Stevens Day (Alaska)
			Bill VonderMehden ran 92-mile park road in 25 hrs., 2011			
<b>26</b> Parents' Day	<b>27</b>	<b>28</b>	<b>29</b> Full moon ○	<b>30</b>	<b>31</b>	



Bull moose with Denali

photo by Ron Niebrugge



# AUGUST

# 2026

SUNDAY MONDAY TUESDAY WEDNESDAY THURSDAY FRIDAY SATURDAY



Willow Ptarmigan

Some people say they feel very small when they think about space.  
I felt more expansive, very connected to the universe.  
– Mae Jemison

						I
2	3 Civic Day (Canada)	4	5	6 First ascent of Mt. Foraker, north summit, 19,400 ft., by Houston party, 1934	7	8
9	10	11	12 New moon ●	13 First flight over Denali summit, Matt Nieminen, 1930	14	15
16	17 Discovery Day (Yukon Territory)	18 Mardy Murie, conservationist, (1902-2003)	19	20 William Dall, naturalist, (1845-1927)	21	22
23	24 Denali Park road closes in 2021 at MP92 due to landslide	25	26	27 Full moon ○	28	29
30	31	Mt. McKinley officially renamed Denali, 2015				

## July

1 2 3 4  
5 6 7 8 9 10 11  
12 13 14 15 16 17 18  
19 20 21 22 23 24 25  
26 27 28 29 30 31

## September

1 2 3 4 5  
6 7 8 9 10 11 12  
13 14 15 16 17 18 19  
20 21 22 23 24 25 26  
27 28 29 30



Morning fog near Wonder Lake

photo by Jon DeLapp

# SEPTEMBER

# 2026

SUNDAY MONDAY TUESDAY WEDNESDAY THURSDAY FRIDAY SATURDAY



Bearberry and lowbush cranberries

**August**  
 1  
 2 3 4 5 6 7 8  
 9 10 11 12 13 14 15  
 16 17 18 19 20 21 22  
 23 24 25 26 27 28 29  
 30 31

**October**  
 1 2 3  
 4 5 6 7 8 9 10  
 11 12 13 14 15 16 17  
 18 19 20 21 22 23 24  
 25 26 27 28 29 30 31

		I	2	3	4	5
			McKinley Park hotel burned, 1972			
6	7 LABOR DAY	8	9	10 New moon ●	11 Rosh Hashana begins	12
					Denali flightseeing grounded for 3 days following terrorist attack on two U.S. cities, 2001	
13 Grandparents' Day	14	15	16	17	18	19
						The Boone and Crockett Club endorsed establishing a national park near Denali, 1915; Denali State Park, 1970
20 Yom Kippur begins	21	22 Autumn Equinox	23	24	25	26 Full moon ○
27	28	29	30	Nature gives to every time and season some beauties of its own. – Charles Dickens		



Dall sheep ram

photo by Chuck Maas

# OCTOBER

# 2026

SUNDAY MONDAY TUESDAY WEDNESDAY THURSDAY FRIDAY SATURDAY



Aurora borealis over pond

Of all the paths you take in life,  
make sure a few of them are dirt.  
- John Muir

				<b>1</b>	<b>2</b>	<b>3</b>
<b>4</b>	<b>5</b>	<b>6</b>	<b>7</b>	<b>8</b>	<b>9</b>	<b>10</b> <small>New moon</small>
<b>11</b>	<b>12</b> <small>COLUMBUS DAY Indigenous People's Day (Alaska) Thanksgiving (Canada)</small>	<b>13</b>	<b>14</b>	<b>15</b>	<b>16</b>	<b>17</b>
<b>18</b> <small>Alaska Day (Alaska)</small>	<b>19</b> <small>Alaska Day (observed)</small>	<b>20</b>	<b>21</b>	<b>22</b>	<b>23</b>	<b>24</b>
<b>25</b> <small>Full moon</small> ○	<b>26</b>	<b>27</b>	<b>28</b>	<b>29</b>	<b>30</b>	<b>31</b> <small>Halloween</small>

## September

1 2 3 4 5  
6 7 8 9 10 11 12  
13 14 15 16 17 18 19  
20 21 22 23 24 25 26  
27 28 29 30

## November

1 2 3 4 5 6 7  
8 9 10 11 12 13 14  
15 16 17 18 19 20 21  
22 23 24 25 26 27 28  
29 30

Tallest unnamed peak in park named for Sen. Ted Stevens, 2010

Charles Sheldon, naturalist, author and advocate for Denali NP, (1867-1928)

Virginia Hill Wood, conservationist, 1917-2013



Bull caribou

photo by Kate & Adam Rice

# NOVEMBER

# 2026

SUNDAY MONDAY TUESDAY WEDNESDAY THURSDAY FRIDAY SATURDAY



Golden Eagle

<b>I</b> Daylight Saving Time ends  Marcus Tyler reported for duty as first permanent park ranger, 1921	<b>2</b>	<b>3</b> Election Day  Park shaken by 7.9 earthquake, 2002	<b>4</b>	<b>5</b>	<b>6</b>	<b>7</b>  USAF C-119 crashed into Mt. Silverthorne (elev. 13,320 ft.), killing 19 people, 1952
<b>8</b> New moon ●	<b>9</b>	<b>10</b>	<b>11</b> VETERANS DAY Remembrance Day (Canada)	<b>12</b>  Hudson Stuck, missionary, mountaineer, (1863-1920)	<b>13</b>	<b>14</b>
<b>15</b>	<b>16</b>	<b>17</b>	<b>18</b>	<b>19</b>	<b>20</b>  Don Sheldon, pioneer aviator, (1921-1975)	<b>21</b>
<b>22</b>	<b>23</b>	<b>24</b> Full moon ○	<b>25</b>	<b>26</b> THANKSGIVING	<b>27</b>	<b>28</b>
<b>29</b>	<b>30</b>	The soul that sees beauty may sometimes walk alone. – Johann Wolfgang von Goethe				

**October**  
 1 2 3  
 4 5 6 7 8 9 10  
 11 12 13 14 15 16 17  
 18 19 20 21 22 23 24  
 25 26 27 28 29 30 31

**December**  
 1 2 3 4 5  
 6 7 8 9 10 11 12  
 13 14 15 16 17 18 19  
 20 21 22 23 24 25 26  
 27 28 29 30 31

Order next year's Denali calendar online at [GreatlandGraphics.com](http://GreatlandGraphics.com)



Relaxing with aurora borealis

photo by Dora Redman



# DECEMBER

# 2026

SUNDAY MONDAY TUESDAY WEDNESDAY THURSDAY FRIDAY SATURDAY



Wickersham Wall, Denali

There are no shortcuts to any place worth going”  
~ Beverly Sills

Pres. Carter signed Alaska National Interest Lands Conservation Act, 1980

		I	2	3	4 Hanukkah begins	5
6	7 Pearl Harbor Remembrance Day	8 New moon ●	9	10	11	12
13	14	15	16	17	18	19
20	21 Winter Solstice	22	23 Full moon ○	24 Christmas Eve	25 CHRISTMAS DAY	26 Boxing Day (Canada)
27	28	29	30	31 New Year's Eve		

### November

1 2 3 4 5 6 7  
8 9 10 11 12 13 14  
15 16 17 18 19 20 21  
22 23 24 25 26 27 28  
29 30

### January 2027

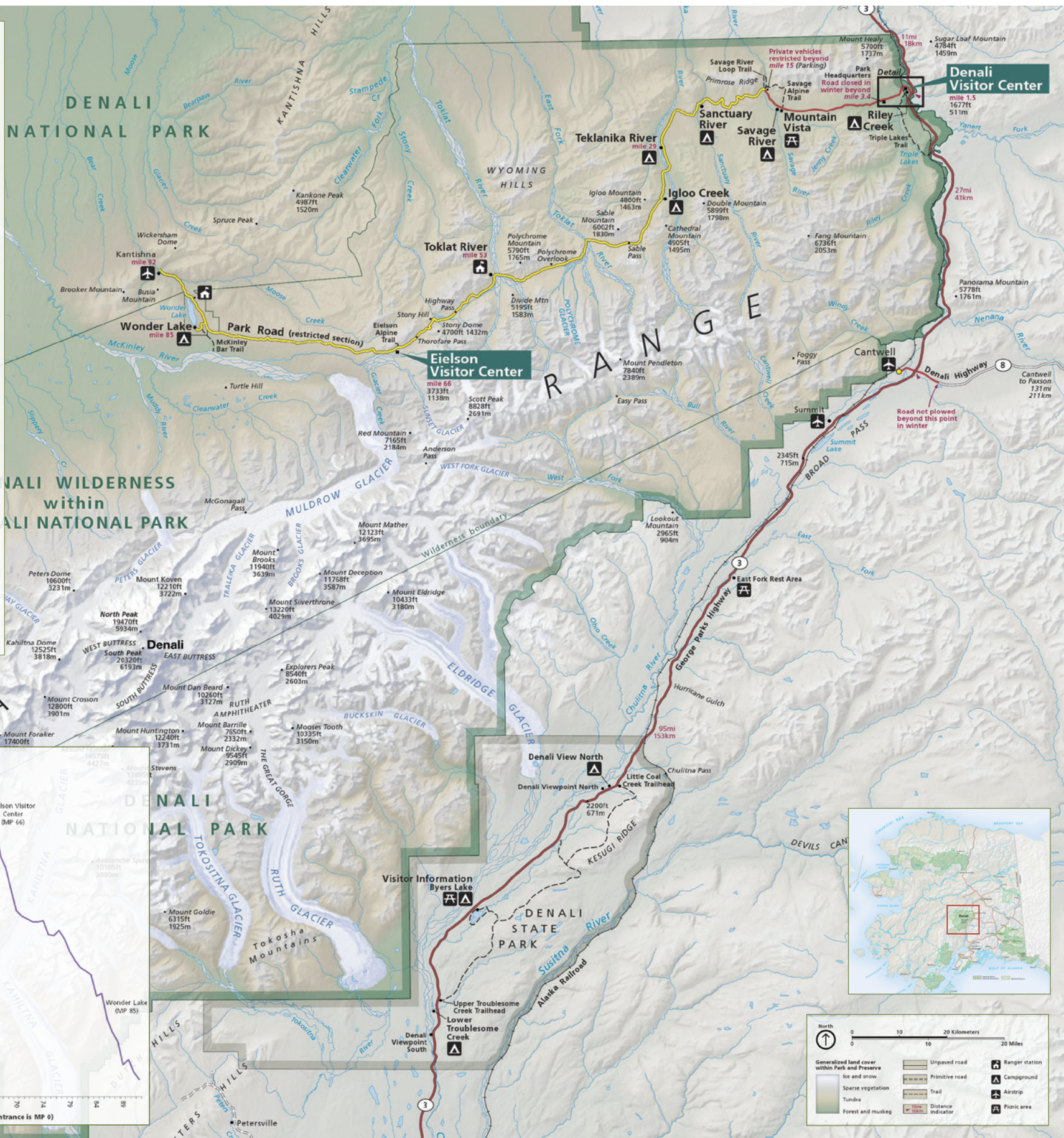
1 2  
3 4 5 6 7 8 9  
10 11 12 13 14 15 16  
17 18 19 20 21 22 23  
24 25 26 27 28 29 30  
31

# DENALI NATIONAL PARK & PRESERVE

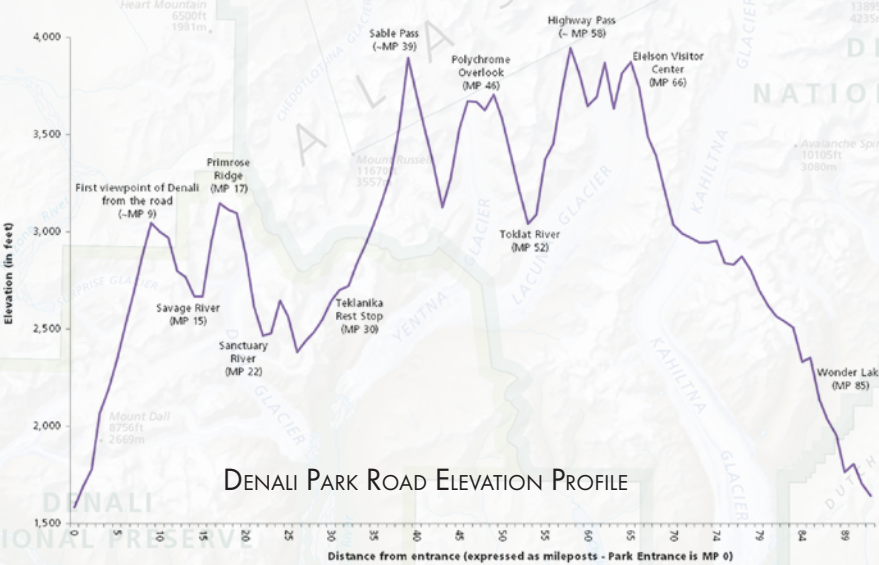
Denali National Park and Preserve is one of the world's most scenic and wildlife-rich national parks. This is also the reason that more than 400,000 people visit Denali each year to hike, backpack, photograph, and enjoy its wilderness beauty. The park and preserve combined are 6,075,029 acres, larger than the state of Massachusetts. Situated in the heart of the Alaska Range, the park's mountain weather is dynamic and constantly changing. Denali crowns the Alaska Range as North America's tallest mountain, rising to 20,310 feet (6,190 m). In 2015 Mt. McKinley was officially renamed Denali, its Athabascan name meaning the "The High One."

## DENALI PARK ROAD

The Denali Park entrance is located 123 miles from Fairbanks and 237 miles from Anchorage. The park has only one narrow and windy gravel road that penetrates 92 miles into the park on the Alaska Range's north side. Beginning at 1,585 ft. (483m), it crosses four mountain passes—the highest at 3,900 ft. (1188m). Private vehicles have been restricted to the first 14-mile paved section of the road since 1972 to minimize impacts on wildlife. Beyond that point, a transit system of buses take visitors into the park to enjoy the region's beautiful landscape, views of Denali, and wildlife along the road.



Denali Park Road Elevation Profile



DENALI PARK ROAD ELEVATION PROFILE



Since private vehicle travel into the park is prohibited, the park offers a shuttle bus service. Transit bus trips originate at the Denali Bus Depot near the park entrance and operate from late May until early September. Transit bus ticket prices vary with the length of the trip into the park. Buses stop for wildlife viewing and will let you off at many locations. No food is available inside the park, so bring your own. No pets are allowed on the buses. There are six campgrounds in the park, and they are often full throughout the

summer, so plan well in advance. You can obtain the permits required to camp overnight in the wilderness backcountry at the Denali Visitor Center at the park entrance. For bus and campground reservations, see [reservedenali.com](http://reservedenali.com) or call 800.622.7275. A wealth of important information is available at [nps.gov/dena](http://nps.gov/dena).

Alaska Geographic is the official nonprofit education and fundraising partner to Alaska's National Parks, National Wildlife Refuges, and BLM Conservation Lands, creating and delivering exceptional education programs and products to connect people with Alaska's public lands. Sales, memberships, and donations are returned to the public lands to support education programs, stewardship projects, and youth programs. Learn more at [akgeo.org](http://akgeo.org).



**January**

S	M	T	W	T	F	S
					1	2
3	4	5	6	7	8	9
10	11	12	13	14	15	16
17	18	19	20	21	22	23
24	25	26	27	28	29	30
31						

**February**

S	M	T	W	T	F	S
	1	2	3	4	5	6
7	8	9	10	11	12	13
14	15	16	17	18	19	20
21	22	23	24	25	26	27
28						

**March**

S	M	T	W	T	F	S
	1	2	3	4	5	6
7	8	9	10	11	12	13
14	15	16	17	18	19	20
21	22	23	24	25	26	27
28	29	30	31			

**April**

S	M	T	W	T	F	S
					1	2
3	4	5	6	7	8	9
10	11	12	13	14	15	16
17	18	19	20	21	22	23
24	25	26	27	28	29	30

**May**

S	M	T	W	T	F	S
						1
2	3	4	5	6	7	8
9	10	11	12	13	14	15
16	17	18	19	20	21	22
23	24	25	26	27	28	29
30	31					

**June**

S	M	T	W	T	F	S
	1	2	3	4	5	
6	7	8	9	10	11	12
13	14	15	16	17	18	19
20	21	22	23	24	25	26
27	28	29	30			

**July**

S	M	T	W	T	F	S
				1	2	3
4	5	6	7	8	9	10
11	12	13	14	15	16	17
18	19	20	21	22	23	24
25	26	27	28	29	30	31

**August**

S	M	T	W	T	F	S
1	2	3	4	5	6	7
8	9	10	11	12	13	14
15	16	17	18	19	20	21
22	23	24	25	26	27	28
29	30	31				

**September**

S	M	T	W	T	F	S
				1	2	3
4	5	6	7	8	9	10
11	12	13	14	15	16	17
18	19	20	21	22	23	24
25	26	27	28	29	30	

**October**

S	M	T	W	T	F	S
					1	2
3	4	5	6	7	8	9
10	11	12	13	14	15	16
17	18	19	20	21	22	23
24	25	26	27	28	29	30
31						

**November**

S	M	T	W	T	F	S
	1	2	3	4	5	6
7	8	9	10	11	12	13
14	15	16	17	18	19	20
21	22	23	24	25	26	27
28	29	30				

**December**

S	M	T	W	T	F	S
				1	2	3
4	5	6	7	8	9	10
11	12	13	14	15	16	17
18	19	20	21	22	23	24
25	26	27	28	29	30	31

## WHAT DID YOU SEE WHILE VISITING DENALI?



**Arctic ground squirrel** (*Spermophilus parryii*)



**Beaver** (*Castor canadensis*)



**Caribou** (*Rangifer tarandus*)



**Collared pika** (*Ochotona collaris*)



**Common loon** (*Gavia immer*)



**Common raven** (*Corvus corax*)



**Coyote** (*Canis latrans*)



**Dall sheep** (*Ovis dalli*)



**Grizzly bear** (*Ursus arctos*)



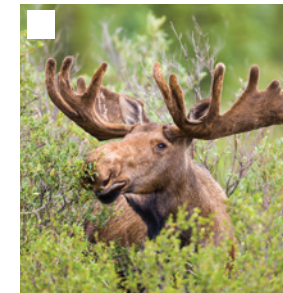
**Golden eagle** (*Aquila chrysaetos*)



**Hoary marmot** (*Marmota caligata*)



**Lynx** (*Lynx canadensis*)



**Moose** (*Alces alces gigas*)



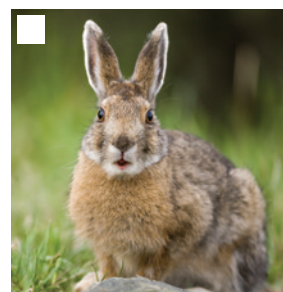
**Porcupine** (*Erethizon dorsatum*)



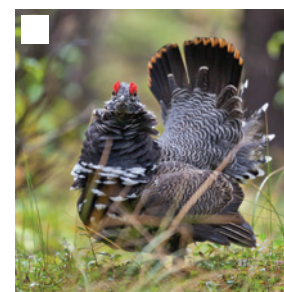
**Red fox** (*Vulpes vulpes*)



**Short-tailed weasel** (*Mustela erminea*)



**Snowshoe hare** (*Lepus americanus*)



**Spruce grouse** (*Falcapennis canadensis*)



**Willow ptarmigan** (*Lagopus lagopus*)



**Wolf** (*Canis lupis*)



**Denali**

# DENALI DENALI NATIONAL PARK AND PRESERVE, ALASKA WILDLIFE & WILDERNESS 2026



Hiker & alpenglow on Denali Steven Miley



South Buttress Carl Johnson



Wonder Lake & Denali Ron Niebrugge



Cotton grass & Alaska Range Fred Hirschmann



Arctic poppies Patrick Endres



Brown bear sow with cubs Patrick Endres



Red Fox CATHY HART



Bull Moose with Denali Ron Niebrugge



Morning fog near Wonder Lake Jon DeLapp



Dall Sheep ram Chuck Maas



Bull Caribou Kate & Adam Rice



Relaxing with Aurora Borealis Dora Redman

Denali National Park and Preserve is one of the world's most scenic and wildlife-rich national parks. This is also the reason that more than 600,000 people visit Denali each year to hike, backpack, photograph, and enjoy its wilderness beauty.

Alaska Geographic ([akgeo.org](http://akgeo.org)) is the official nonprofit education and fundraising partner to Alaska's National Parks, National Wildlife Refuges, and BLM Conservation Lands, creating and delivering exceptional education programs and products to connect people with Alaska's public lands. Find resources to help plan your trip to Denali National Park at [nps.gov/dena](http://nps.gov/dena). Visit [GreatlandGraphics.com](http://GreatlandGraphics.com) to order from our full line of award-winning Alaska calendars, books, and distinctive Alaska art.



Denali Wildlife Photo Reference



Denali Park Map

## INSIDE

- ◆ 12 large Denali photos plus monthly quotes and inset photos
- ◆ Denali Park historical dates and nature facts
- ◆ Denali Park road map with elevation profile
- ◆ Denali wildlife photo reference checklist
- ◆ 2026 annual calendar



GREATLANDGRAPHICS.COM  
sales@greatlandgraphics.com  
907.337.1234



Scan code and sign up to receive special sales and coupon notifications.

facebook greatlandgraphics  
instagram greatlandgraphics

© 2025 Greatland Graphics | Edition 23 | Editors: Carl Johnson & Michelle Turner | Design: Jamin Taylor | photos © individual photographers. Calendar dates and times for equinoxes, solstices and moons are adjusted for Alaska time.



### SUSTAINABLE

This calendar was printed with plant-based inks on paper milled from trees harvested in accord with guidelines promoting responsible forest management.

### ALASKA PROUD

We are a small, Alaska owned and operated business that exclusively publishes Alaskan photographers, authors, and artists' work. When you purchase our products, you support them.

### RESPECT ALASKA

We love Alaska's big and wild spaces, the beautiful landscape, and abundant wildlife. We believe these natural treasures must remain for our children's children and generations that will follow.

### GIVING BACK

We support the future of Alaska and its people, communities, and the land we all cherish. When you purchase our products, a portion of the proceeds will be donated to select Alaska non-profits.

